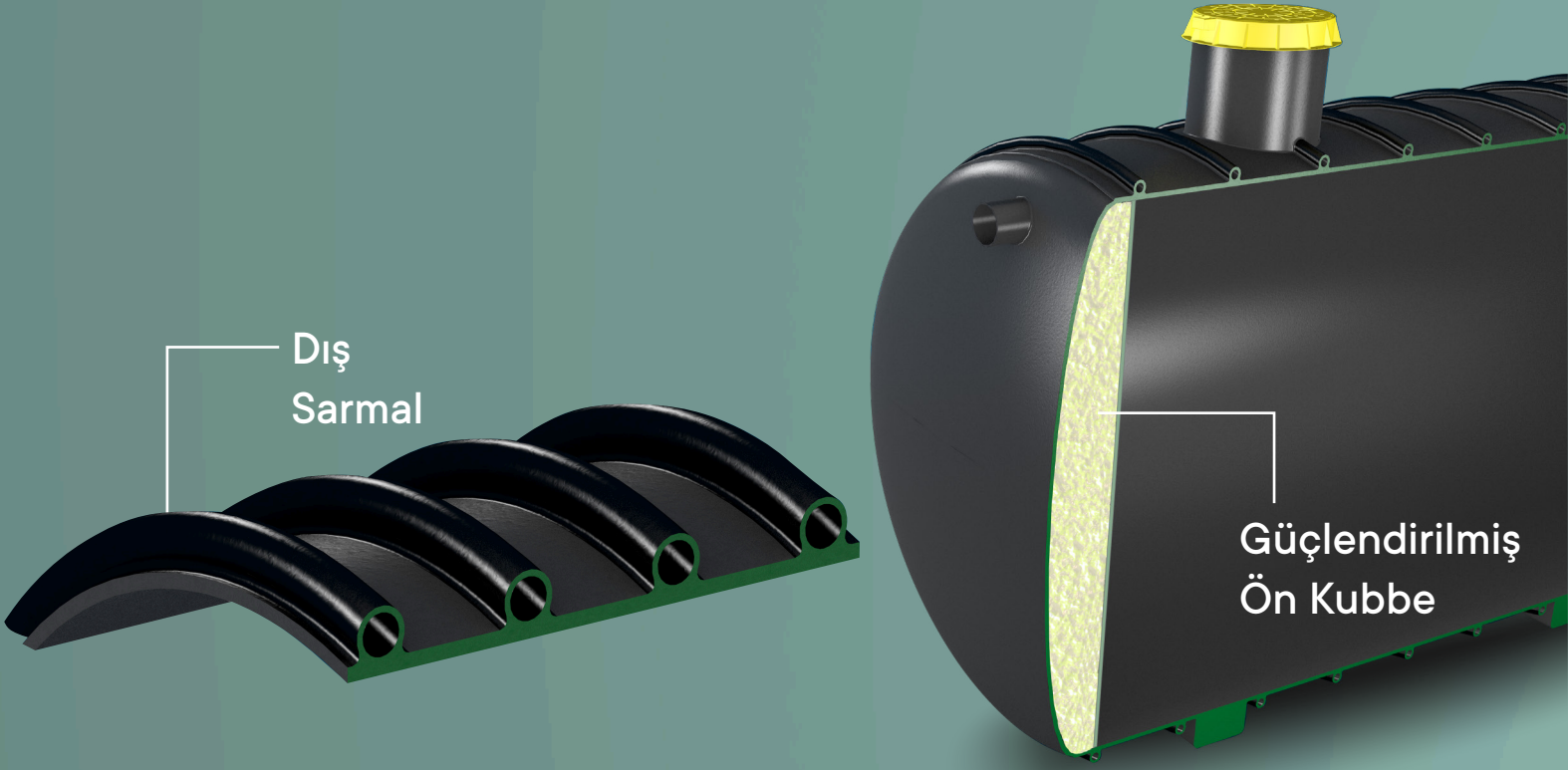
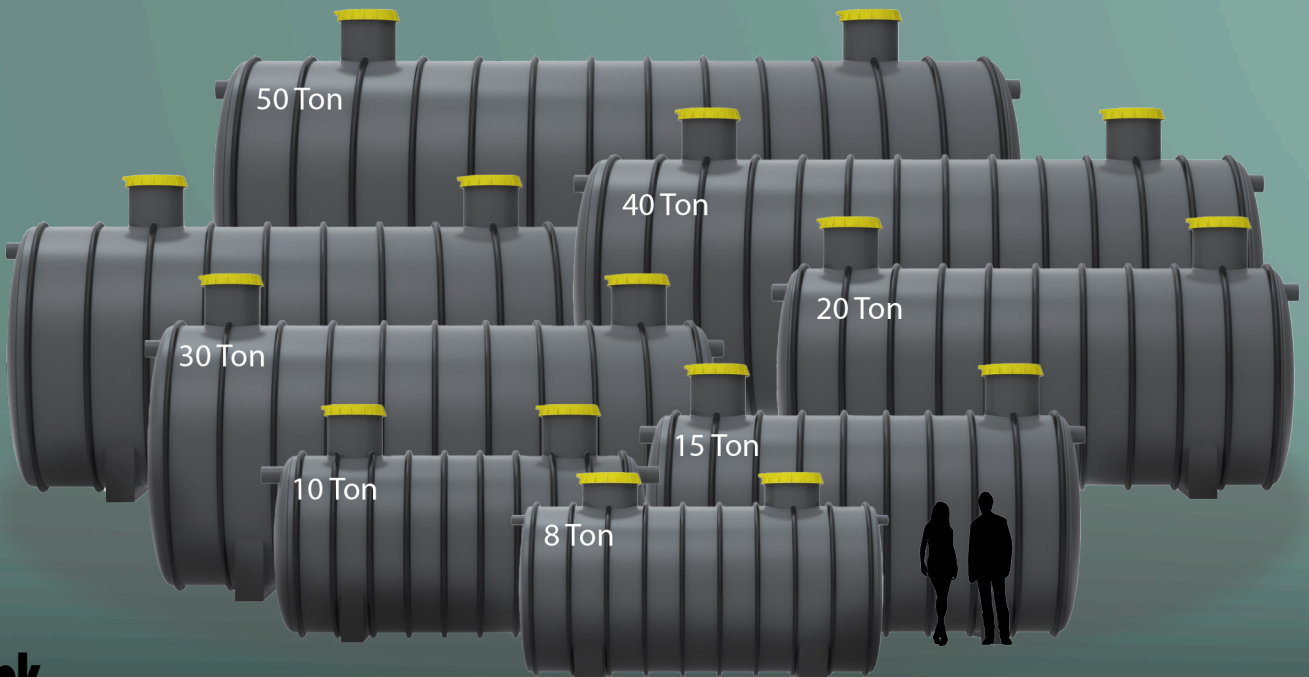


YER ÜSTÜ/YER ALTI

SU VE FOSEPTİK TANKLARI



'Yeraltı yüklerine karşı **Tankplast**'



Tek cidarlı tanklarda yük riskleri TankPlast'ın tanklarında azaltılmıştır.



Polietilen



Polietilen



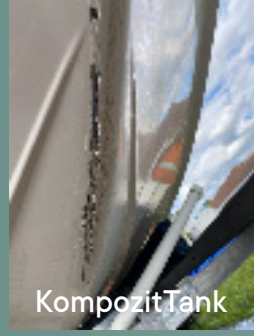
Polietilen



Polietilen



Kompozit(Fiber)Tank



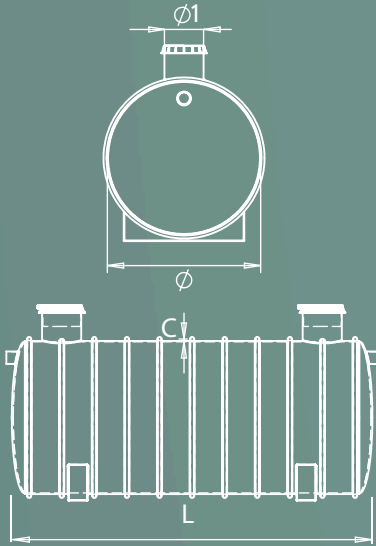
KompozitTank



Kompozit Tank



Paslanmaz Çelik

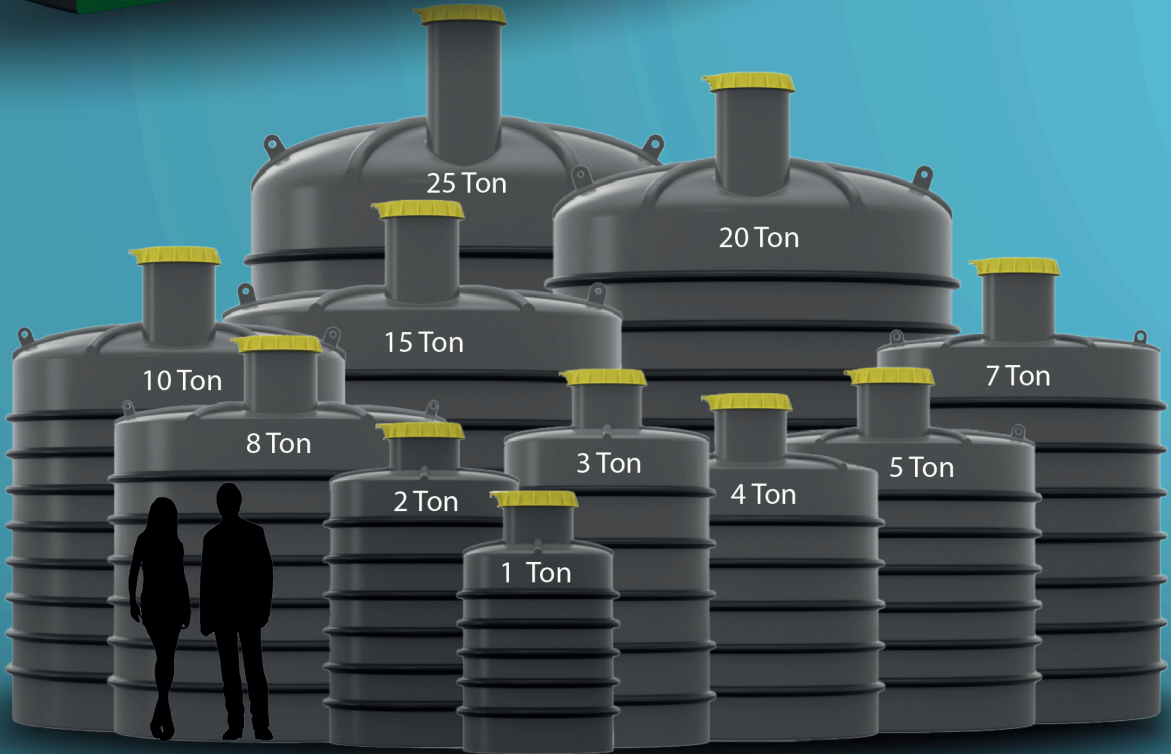


MODEL	ÇAP Ø (mm)	UZUNLUK L (mm)	KALINLIK(Sarmal Dahil) c (mm)	BACA ÇAPI Q1(mm)	AĞIRLIK (kg)
8 Ton	1850	3140	75	600	200
10 Ton	2050	3180	75	600	225
15 Ton	2400	3600	85	600	375
20 Ton	2400	4500	85	600	490
30 Ton	2900	4800	85	600	675
35 Ton	2900	5400	85	600	750
40 Ton	2900	6000	85	600	930
50 Ton	3050	7100	85	600	1250



YER ÜSTÜ/YER ALTI

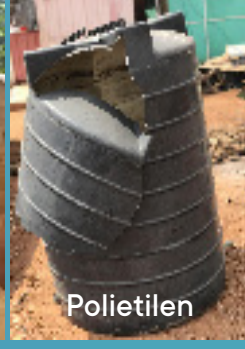
SU VE FOSEPTİK TANKLARI



Tek cidarlı tanklarda yük riskleri TankPlast'ın tanklarında azaltılmıştır.



Polietilen



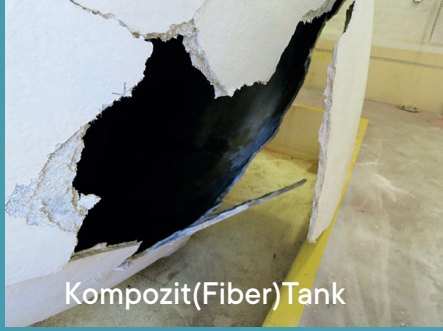
Polietilen



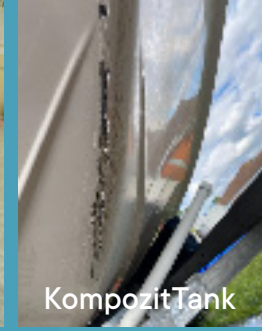
Polietilen



Polietilen



Kompozit(Fiber)Tank



KompozitTank

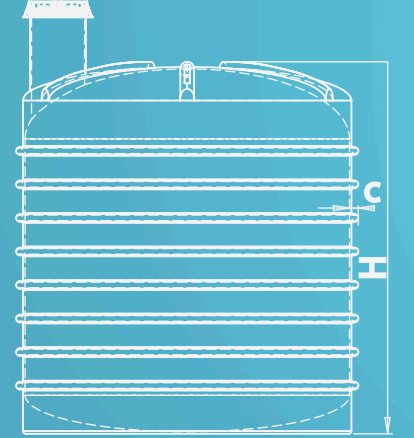
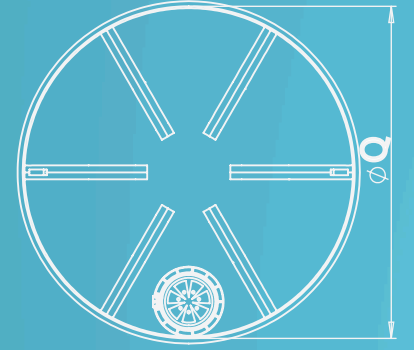


Kompozit Tank



Paslanmaz Çelik

‘Yeraltı yüklerine karşı Tankplast’



MODEL	ÇAP Ø (mm)	YÜKSEKLİK H (mm)	KALINLIK(Sarmal Dahil) c (mm)	AĞIRLIK (kg)
1 Ton	1170	1060	75	55
2 Ton	1450	1730	75	85
3 Ton	1560	2100	75	110
4 Ton	1910	1850	75	120
5 Ton	2110	1950	75	135
7 Ton	2110	2500	75	180
8 Ton	2460	2120	75	210
10 Ton	2480	2350	85	250
15 Ton	2950	2820	85	375
20 Ton	2950	3400	85	525
25 Ton	3130	4000	85	650